



Fig. 1

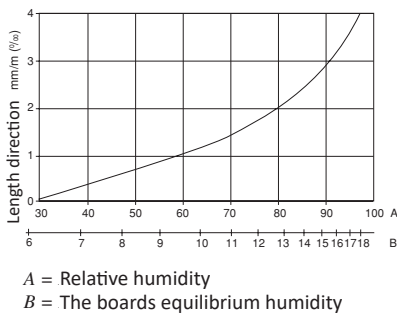


Fig. 2

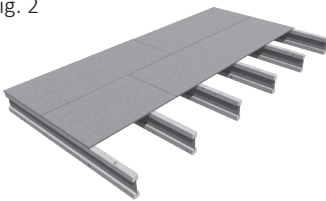


Fig. 3

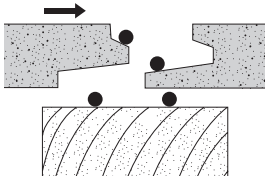


Fig. 4

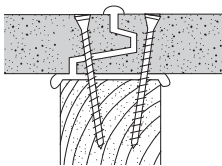
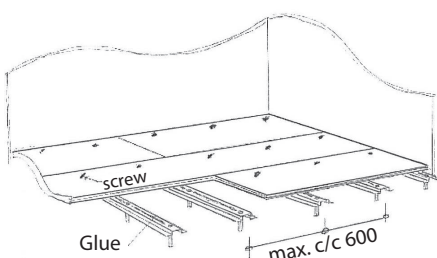


Fig. 5



Assembly Instructions (UK)

General information

These guidelines apply to the assembly of 18 and 22mm Forestia Floor in Standard P6 and Extra P5/P6. The Forestia Floor is designed with tongue and groove on all four sides.

The Forestia Floor has a moisture content of 5-8 % ex factory, corresponding to an equilibrium of 30-60 % RH (fig. 1). Therefore it is important that the building humidity is kept under control with the help of ventilation and heating. Bricks and mortar work must be completed prior to the installation of the Forestia Floor. The boards will move a little according to variations in humidity (fig. 1).

Areas of application

Forestia floors can be used as supporting floors on wooden beams or as floating floors on another supporting subfloor.

When 18 mm Forestia flooring is used as a supporting floor on wooden beams, a rigid top floor must be used, such as 14 mm parquet or 7 mm laminate flooring. Forestia Floor Standard P6 is not moisture resistant and must always be installed after the building is watertight (climate class 1).

Forestia Floor Extra P5/P6 are approved as platform floor (Climate class 2). Forestia Floor Extra P5/P6 are recommended in building areas where there are requirements for moisture resistant materials, such as bathrooms and utility rooms.

Transport, storage, handling

The boards must be protected against moisture during transport and storage. The boards must be stored on a flat, stable base with 3-5 laths per pallet. The boards must never be placed directly on the ground. If the boards have to be placed outdoors, the pallets must be placed on a moisture barrier to prevent moisture being absorbed from the ground. The boards must be transported, stored and handled in a way that do not damage the tongue and groove. If the tongue and groove is damaged the joint must be supported or the board must be replaced.

Base for mounting

The beams must be dimensioned in accordance with the building regulations, and they must be leveled and installed with precise centre distance of max. c/c 0,60m.

All free board edges must be supported. If Forestia Floor is installed as a floating floor, please refer to installation instructions for Forestia floating floor.

Installation

The boards are mounted in junctions with longitudinal direction across the beams with the ink-jet stamped side facing up. The boards shall span over at least two beams and the end joint shall always be made on the centre line of the beam (fig. 2).

Forestia Floor 22 mm can also be installed with the end joint between the beams without support.

Max evenly distributed load 3.0 kN/m² and point load 2.0 kN. Free board edges towards walls or openings must always be supported. There must always be a clearance of at least 10 mm towards all fixed structures. Large floor areas, longer than 10 m, must be divided into fields with expansion joints between the fields.

The board edges must be supported if there are openings greater than 0.15 x 0.15 m. The boards must be glued to the beams and in all the joints. This stiffens the construction and reduces the danger of creaking when the boards dry out. We recommend placing two strings of glue on each floor beam. **The board tongue and groove must be fully glued (fig. 3).**

The board joints shall be tight, and excess glue must be removed (fig. 4). Glue consumption is approx. 1 litre per. 10 m² board surface.

During the construction period, platform floors can be exposed to precipitation. Water, rime or ice must be removed from the beams before laying of boards. It is important that the glue is resistant to the climatic conditions faced during installation. Contact the manufacturer of glue for the right type of glue.

The floor boards must be fastened to all supports with screws or nails. It is recommended that screws are intended for fastening wood to wood or wood to galvanized steel. We recommend using screws suited for chipboards, 4.2/55mm. The use of screws is the best insurance against creaking if the floor beams should shrink after the boards are mounted. By machine nailing, it must be used 2.9/65 or equally effective special nails which offers high withdrawal resistance due to ring formation of shank.

The number of screws or nails must be at least 4 pcs. at each board end and 3 pcs. for each beam on the board.

The screws must be sunk 2-3 mm into the board. The holes **must not be spackled** as the heads of screws may rise when the beams shrink.

Surface treatment

The boards must not have a moisture content higher than 10% when laying the top floor. Possible surface damage must be repaired before laying the top floor. Any rough edges in the joints must be leveled by sanding before installation of the top floor.

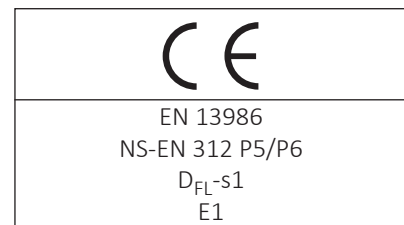
Before the top floor is mounted it must be ensured that the subfloor satisfies the flooring manufacturer's requirements for flatness.

If under floor heating is to be used we recommend water bourne heating systems. Electric floor heating in wooden flooring constructions is not recommendable.

The boards must be dried down to max. 7% moisture content before the upper floor is laid. Contact the flooring installer and the manufacturer of the floor heating system. Avoid thin vinyl flooring with glossy surfaces, as it is easy for board joints and irregularities to become visible through this type of flooring.

General Information

All our products undergo thorough quality control. However, faults can still arise on some products. The customer is required to check purchases in accordance with our general sales and delivery terms, including a check of all products prior to assembly. Assembly and maintenance of products by the customer must be in accordance with the supplier's instructions. The supplier is not liable for malfunctions, defects, damage, or wear-and-tear, etc. caused by incorrect assembly or maintenance. In all cases, our liability as a supplier is limited to the purchase price of the part of the product that is defective. We reserve the right to make changes to the specifications without prior warning.



Forestia AS, Damvegen 31
NO-2435 Braskereidfoss
Phone: +47 38 13 71 00
Mail: forestia.kundesenter@byggma.no
www.forestia.com